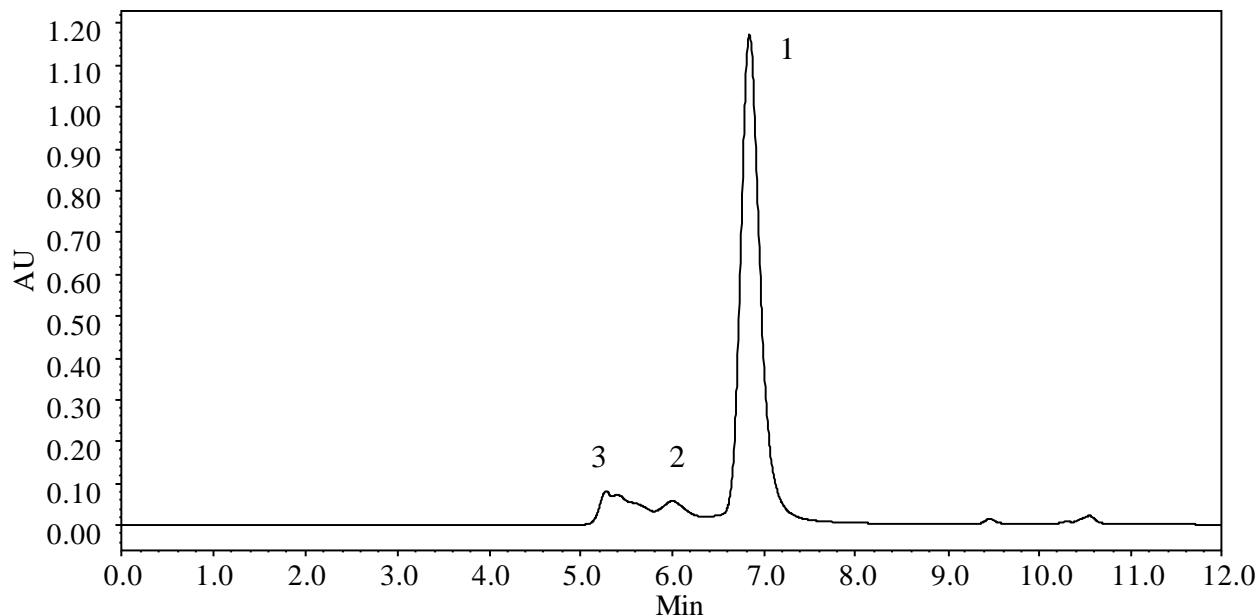




Size Exclusion Separation of Protein and PEGylated Proteins



Column: Zenix™ SEC-150 (3 μm, 150 Å, 7.8x300 mm)
Mobile Phase: 150 mM Phosphate Buffer, pH 7.0;
Flow Rate: 1.0 mL/min
Temperature: Ambient
Detection: UV 214 nm
Concentration: 2.0 mg/mL
Injection Volume: 20 μL
Samples: 1, Protein with MW 70KD (from an undisclosed drug development company) 2, Protein 1 attached with 1 PEG (MW 40KD) molecule
3, Protein 1 attached with 2 PEG (MW 40KD) molecules

Keywords: Size exclusion, Zenix, PEGylated protein, protein