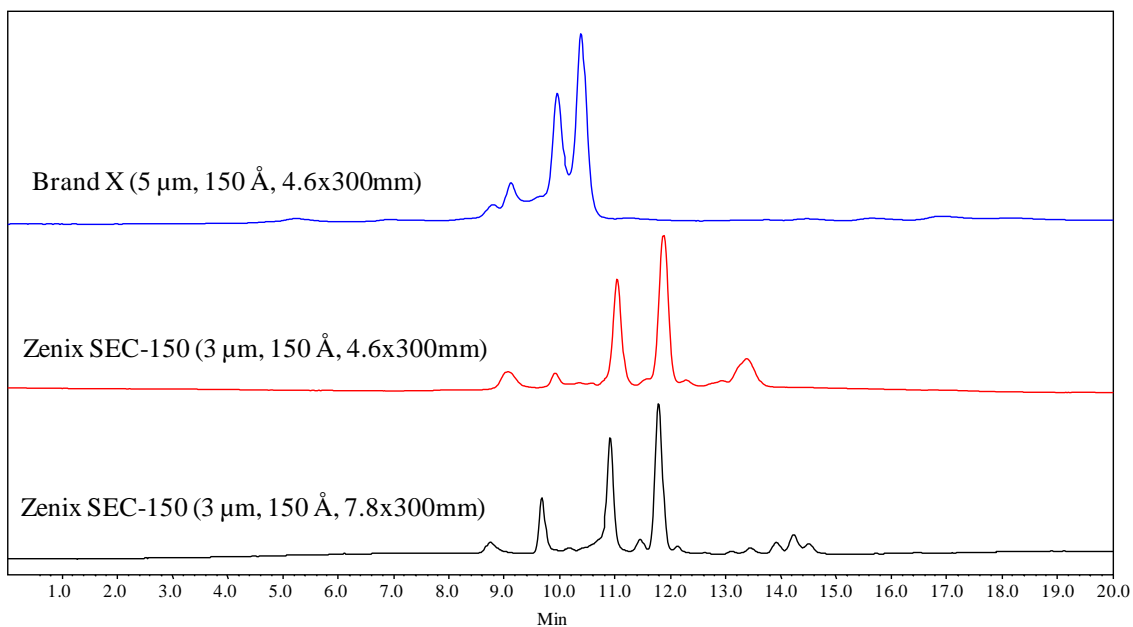




SEC Resolution Comparison for Peptide Separation



Mobile Phase: 150 mM Phosphate Buffer, pH 7.0;
Flow Rates: 0.35 mL/min for 4.6x300 mm & 1.0 mL/min for 7.8x300 mm
Temperature: Ambient
Detection: UV 214 nm
Injection Volumes: 5 μL for 4.6x300 mm & 20 μL for 7.8x300 mm
Sample: Peptide mixture (provided by a customer)

Keywords: Size exclusion, Zenix, peptide, high resolution