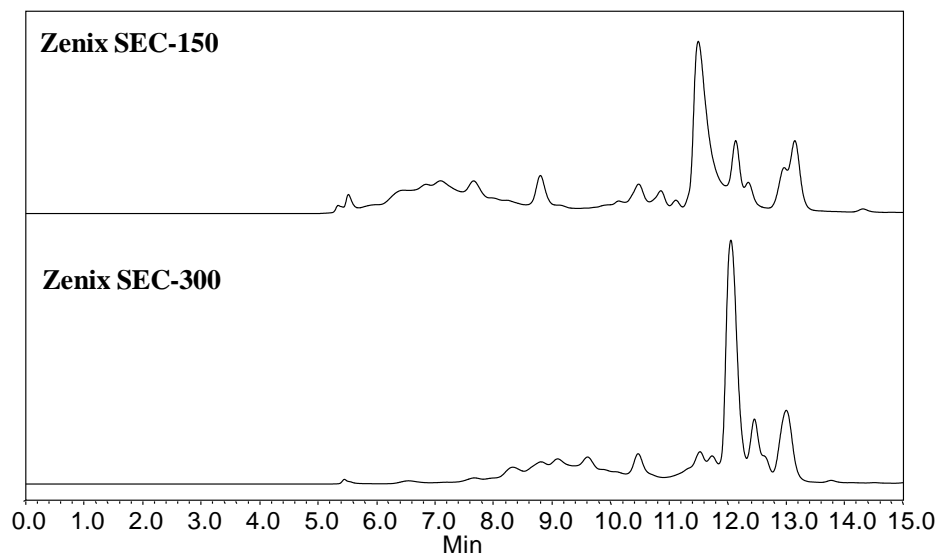




Separation of *E. coli* lysate with various pore size Zenix™ columns



Column: Zenix™ SEC (3 μ m, 7.8x300 mm)
Mobile Phase: 150 mM Phosphate Buffer, pH 7
Flow Rate: 1.0 mL/min
Temperature: Ambient
Detection: UV 214nm
Concentration: 2.5 mg/mL
Injection Volume: 10 μ L
Sample: *E. coli* lysate

Keywords: Size exclusion, Zenix, proteins, bacteria, *E. coli*, lysate, pore size