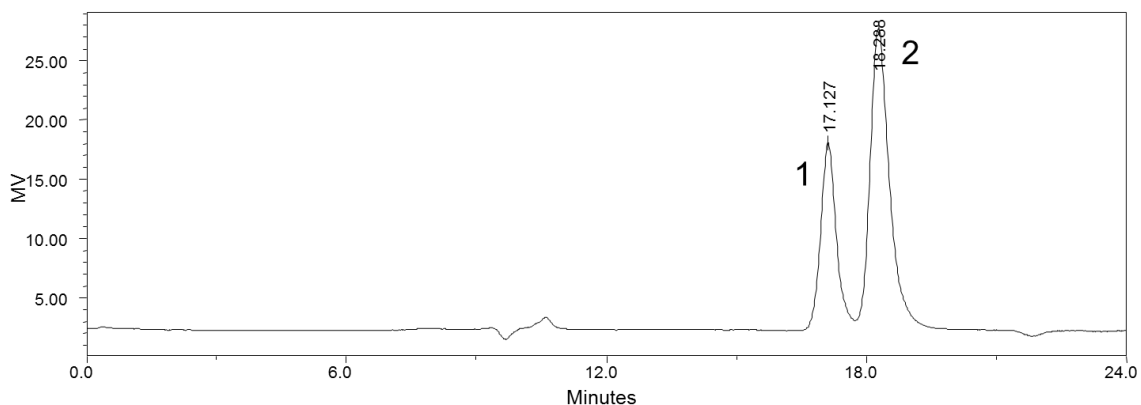
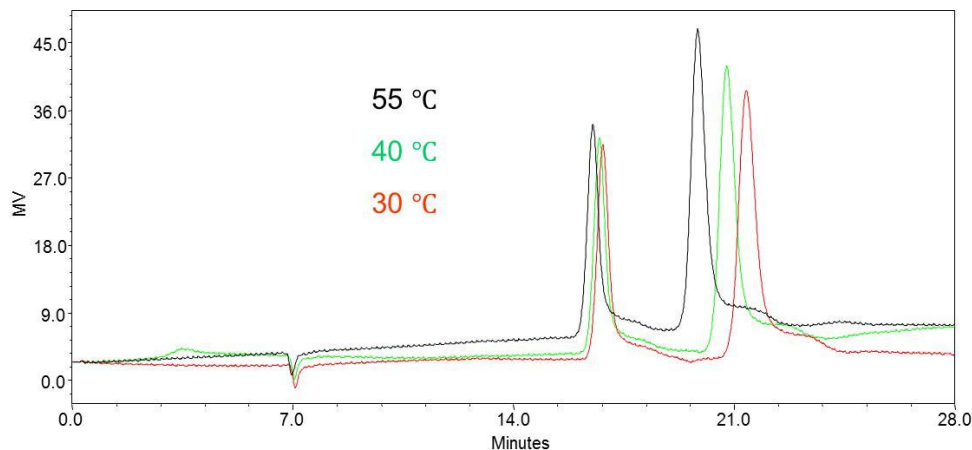




## Analysis of formic and Levulinic acid on Carbomix<sup>®</sup> H-NP5 8% and NP10 5% (7.8x300 mm)



Column: Carbomix<sup>®</sup> H-NP5:8% (7.8\*300 mm)  
Mobile Phase: 2.5 mM H<sub>2</sub>SO<sub>4</sub>  
Flow Rate: 0.5 mL/min  
Temperature: 55 °C  
Detection: RI  
Injection Volume: 10 µL  
Pressures: 400 psi  
Samples: Mixture of 1. Formic acid and 2. Levulinic acid (1% each in water)



Column: Carbomix<sup>®</sup> H-NP10:5% (7.8\*300 mm)  
Mobile Phase: 2.5 mM H<sub>2</sub>SO<sub>4</sub>  
Flow Rate: 0.5 mL/min  
Temperature: 55 °C  
Detection: RI  
Injection Volume: 10 µL  
Pressures: 400 psi  
Samples: Mixture of formic acid and Levulinic acid (1% each in water)

Keywords: Carbohydrate, Carbomix, hydrogen form, organic acid, formic acid, levulinic acid