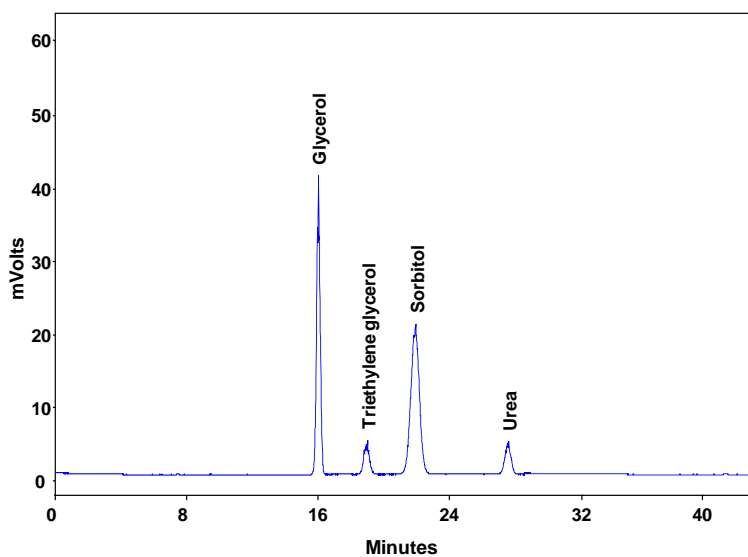




Analysis of food softeners on Carbomix[®] Ca-NP10 (10 μ m, 8%, 7.8x300 mm)



Column: Carbomix[®] Ca-NP10 (10 μ m, 8%, 7.8x300 mm)
Mobile Phase: H₂O
Flow Rate: 0.6 mL/min
Temperature: 85 °C
Detection: ELSD
Injection Volume: 5 μ L
Samples: glycerol, triethylene glycerol, sorbitol, urea

Keywords: Carbohydrate, Carbomix, calcium form, ELSD, food softener, glycerol, triethylene glycerol, sorbitol, urea