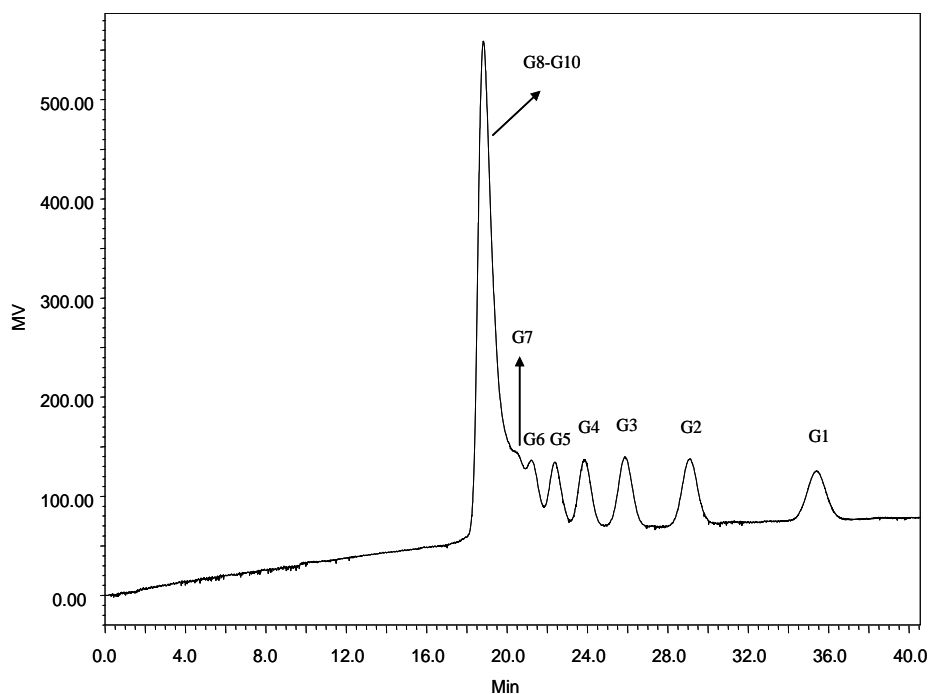




Analysis of Glucidex on Carbomix[®]-Ca (5 μ m, 8%, 4.6x300 mm)



Column: Carbomix[®] Ca-NP5 (5 μ m, 5% crosslinkage, 7.8x300 mm)
Mobile Phase: Water, pH 6.0
Flow Rate: 0.2 mL/min
Temperature: 85 °C
Detection: Differential Refractometer
Injection Volume: 20 μ L
Samples: Glucidex (100 mg/mL), 10 components from G1 (monomer) to G10 (10th mer)
(Courtesy of Miyako Kawakatsu, M&S Instruments, Inc.)

Keywords: Carbohydrate, Carbomix, calcium form, sugar, maltodextrins, Glucidex